

Sample Received: 9/24/2019 Report Date: 9/26/2019 Report:

CLAD2- Lifter- HA- DTF- 9-24-19

Potency Analysis Report

Sample: **19411H-P PLANTS**

Item Notes:

METRC No. 1A4000712682977000000048

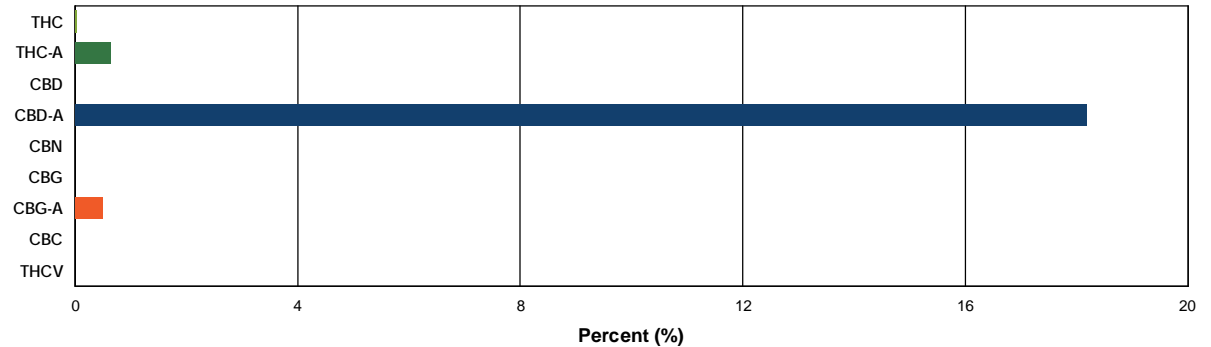
Batch:

CANNABINOID LEVELS

| | % | mg/gram |
|--------------|--------------|---------------|
| THC | 0.03 | 0.29 |
| THC-A | 0.64 | 6.38 |
| CBD | < LLOQ | < LLOQ |
| CBD-A | 18.18 | 181.84 |
| CBN | N/D | N/D |
| CBG | N/D | N/D |
| CBG-A | 0.50 | 5.04 |
| CBC | N/D | N/D |
| THCV | N/D | N/D |
| Total | 19.36 | 193.55 |

Total THC*: 0.29 %
 THC + THC-A*: % by weight

Total CBD*: 7.98 %
 CBD + CBD-A*: % by weight



Additional Information

**THC Conversion 4.35%
 **CBD Conversion 0.00%

*Total THC is calculated using the equation $THC + (THC-A \times 0.877)$. This formula accounts for the weight lost by THC-A when it is decarboxylated to become active THC. The same formula is used to determine Total CBD.

**THC/CBD Conversion indicates the percentage of total cannabinoid that was already converted to active cannabinoid at the time of testing. 100% indicates that all cannabinoid present was in the active, decarboxylated form at the time of testing.

Homogeneity is determined by the relative standard deviation (%RSD) of four replicates. The product passes for homogeneity if the %RSD of the four replicates is less than 15%.

N/D = Not Detected. The level of analyte was below the detection threshold for this test.

LLOQ = Lower Limit of Quantitation. <LLOQ signifies that the analyte was detected at a concentration below the calibrated range of the method and could not be accurately measured.

Authorized by: Roy Turton, Interim Lab Director

ISO/IEC 17025:2017

